

AUSTRALIAN SLEEPING IN STYLE: BRILLIANT FINDS FOR CHIC DREAMS

HOUSE & GARDEN

Spring *colour* carnival

REFRESH, RE-COVER AND RECOLOUR
– *our upholstery special*

100+
pages of

*expertly COLOURED
and CURATED rooms*





MAGIC TOUCHES

Plans to update a pair of tired rooms evolved into an all-encompassing renovation that has made a world of difference to this harbourside Sydney home.

STORY *Jackie Brygel* | STYLING *Jodie Gibbons* | PHOTOGRAPHY *Brigid Arnott*

DINING Pendant light, Snelling. Dining table, Dellis Furniture. Titus dining chairs, Cotswold InOut Furniture. Custom banquette cushion in Warwick Fabrics 'Plinth Cobalt' (seat) and 'Rhea Atlantic' (back), made by Urban Upholstery. Chinois Shunju roman blinds, Blinds by Peter Meyer. Walls painted Dulux White Exchange. **ENTRY HALL** Darcy the English springer spaniel greets visitors to this beautifully refurbished home. Weplight Lora pendant light, Enlightened Living. Runner, Tigmi Trading. Console, Pond. Walls painted Dulux White Exchange, front door painted Dulux Monument.





KITCHEN/PANTRY Joinery by Janz Designs. Line Pendant 01, Snelling. Ombra Perla porcelain benchtop (on island), Artedomus. The wall-side benchtop is stainless steel. Splashback is Super White dolomite from CDK Stone. Wall-side cabinetry finished in Dulux Lexicon Quarter; island is American oak. Kintore cabinet pulls, Lo+Co. Platter on island by Hayden Youlley, antique pot from 55 Parrots. Rich Brilliant 'Willing Dimple' wall light (in pantry), Creative Lighting Solutions. Moroccan wall tiles in Snow (in pantry), Surface Gallery. Brodware 'City Stik' mixer in Brushed Nickel, Just Bathroomware. Zip tap, Miele ovens and cooktop, and Qasair rangehood, all from Winning Appliances. Bar stools, Fenton & Fenton. Artwork by Vynka Hallam. VJ panelling, Easycraft.



The transformative power of colour and texture is evident right from the front door of this creatively reimagined Federation home on Sydney's Lower North Shore. While the home offers spellbinding views of the city's famed harbour, there's much to captivate within its walls too, thanks to interior designer Kate Hardy of Cloth+Stone Designs. "The inspiration was the complex and changing views of the harbour," she says. "A harmonious palette of blues, nickel, blush pinks and neutrals infuses the spaces to provide a connected and cohesive interior."

The owners, a couple who share the late-1800s house with their two teenage children and their rambunctious English springer spaniel, Darcy, took little convincing to give the home they loved more impactful decor.

Having bought the two-level house in 2013, the family lived in it for eight years before approaching Kate. "At the time, we were only planning to redo two rooms on the ground floor

- the original formal dining and living rooms - which were in dire need of an overhaul," says the owner. "But actually, the entire house was looking pretty tired. Before long, we had asked Kate to oversee a much more extensive renovation of the entire house."

Kate says sophisticated but hard-wearing finishes were top of the brief - "we're pretty hard on our poor house," says the owner, laughing - along with a more free-flowing layout to suit the family's lifestyle. The challenge, then, was in melding the home's gracious heritage features with contemporary style and functionality to create a warm and welcoming refuge for its busy owners and their regular stream of guests.

Retaining the exquisite period features, including marble fireplaces, ornate ceiling roses, exposed sandstone walls and arched walkways, was essential. But doing so was going to take some careful planning. "On the lower level, the spaces were ill-defined," says Kate. "Some rooms were odd shapes, while others were large and open, making it difficult to furnish." ►



LIVING Hudson sofa, Molmic. Kelly Wearstler 'Graffito' cushions in Teal/Pearl. *Spit Bridge* artwork by Mia Oatley. Kiss Cuddle side tables, Mr and Mrs White. Coffee tables, Pond Boutiques. Black stool, Lived In Coogee. Nikki armchair with stool, Grazia & Co. Muuto 'Leaf' floor lamp, Living Edge. Attalos wall light, Marz Designs. Curtains in Westbury Textiles 'Antique Linen' by Nuevue. Walls painted Dulux Grey Reflection. Magic rug in Mineral, Rug Collection.

In addition to creating more flexible living spaces on the ground floor and enhancing the home's connection to the outdoors, the owners desired a walk-in pantry, a rejuvenated main bedroom suite and, on the lower-ground level, new sleeping quarters for the children. They also wanted an expanded and more user-friendly entertainer's terrace to make optimal use of the property's magical water views.

A draftsman and town planner with heritage expertise were engaged to finesse the plans; the design and approval process spanned 10 months. Due to the significant scope of the works, undertaken by Michael Smith Constructions, the family moved out for the nine-month

duration, with the renovation finally completed in November last year.

"In order to accommodate the eat-in kitchen and butler's pantry the owners wanted, we relocated the staircase to what had previously been a bathroom, and then repurposed a study to create a new family bathroom," says Kate. "We also made substantial changes to the lower-ground floor, removing walls to create more generous bedrooms for the children, two additional bathrooms, a family room and a chic laundry with plenty of room to manoeuvre. We incorporated as much built-in storage as we possibly could and ensured both the hard surfaces and soft furnishings were child- and pet-friendly."

As with most renovation projects, there were plenty of challenges along the way. "We had to replace a lath and plaster ceiling at the front of the house that was badly cracked," says Kate. "The room had an original 1800s ceiling rose that we wanted to retain, however, so Michael [Smith] came up with a plan to cut out the rose, replace the ceiling, then finish it off with a matched cornice and the restored ceiling rose."

But there were pleasant surprises too, says Kate. "We uncovered a huge skylight in the main bedroom's walk-in wardrobe. This flooded the space with natural light - perfect for dressing."

Throughout the home, statement lighting, evocative works of art and ▶



THE PALETTE

Dulux White Exchange
(main walls)

Dulux Tranquil Retreat
(main bedroom)

Dulux Five Fingers Peninsula
(formal dining)

tactile finishes - from VJ panelling, linen curtains and velvet upholstery to richly veined Super White dolomite, ethereal Baltic White marble and soft-grey terrazzo - leave a memorable mark. "Natural stone is a marvel of nature - all the variations, colours and textures are just incredible," says Kate. Here, she has showcased the versatility of her favourite material too: each element in the thoughtful palette is understated yet

transformative and brings yet more warmth and character to the table.

The homeowners are elated with the outcome. "It's all come together beautifully," they say. "The decision to go for it with a whole-house renovation was absolutely the right one. We're here to stay." ▶

Cloth+Stone Designs, Mosman, NSW; 0402 412 214 or clothandstonedesigns.com.au. Michael Smith Constructions, Palm Beach, NSW; mscbuild.com.au.

Each element in the thoughtful palette
is understated yet transformative.



MAIN BEDROOM Custom bedhead by HJ Furniture, upholstered in Mokum 'Carter' fabric. Charlton wall light, The Montauk Lighting Co. *The Burst* artwork by Emily Persson. Orla bedside table, Grazia & Co. Curtains and blinds by Fybre Furnishings. Wall painted Dulux Tranquil Retreat. **FORMAL DINING** Dining chairs from MCM House, reupholstered in Mokum 'Vienna' velvet in Antique. Mirrors, Tantra Imports. Paris au Mois d'Août pendant lights, Hub Furniture. Ghost Gums photographic print by Kara Rosenlund. Wall and joinery painted Dulux Five Fingers Peninsula. T-bar cabinet pulls, Hepburn Hardware. The fireplace is original.



LANDING VJ100 wall cladding, Easycraft. Custom balustrades by Steadly Steel. Ay Illuminate 'Z1' pendant, Spence & Lyda. Artwork by Debbie Mackenzie. **GUEST ENSUITE** *Top right* Issy Blossom triple mirror with shaving cabinet, Reece. Selecta long sconce wall lights, The Montauk Lighting Co. Spanish subway tiles, Surface Gallery. My Azule floor tiles, Jatana Interiors. City Stik tapware, Brodware. Custom vanity with Smartstone Nieve White top. **FAMILY BATHROOM** *Above left, above right and opposite* Baltic White marble vanity top and floor tiles and Moroccan wall tiles in Snow, all Surface Gallery. Sirene 'Melbourne' bath, Dadoquartz Bathware. Saucer Bubble pendant light by George Nelson, Living Edge. Compact 02 wall light and Line 2.0 wall light, both Snelling. American-oak veneer joinery, Janz Designs. T-bar cabinet pulls, Hepburn Hardware. Menu 'Nimbus' mirror, Luumo Design. Walls painted Dulux Lexicon Quarter. Towels, Cultiver. Kalahari rug in Natural/Pumice, Armadillo. Stool, Tow and Line. City Plus twin shower and City Stik tapware, all Brodware. ▶

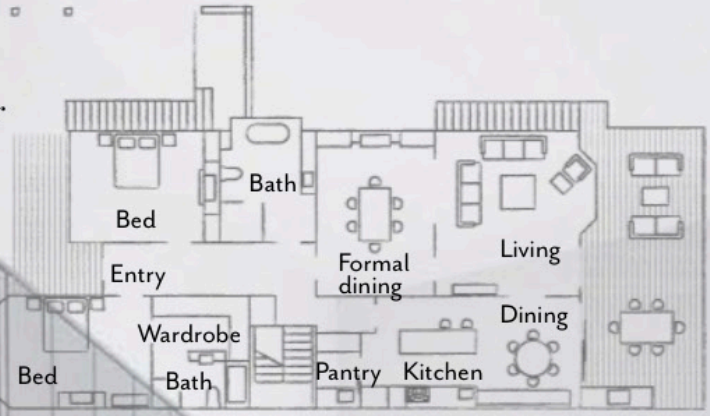
**THIS IS
THE LIFE**

“One of the biggest improvements to the home’s functionality was adding storage, storage and more storage,” says interior designer Kate Hardy. “The kids’ bedrooms now have custom wardrobes and drawers, plus built-in desks with shelves. And the cabinetmaker even found a secret place to store shoes under the stairs at the back of another cabinet!”

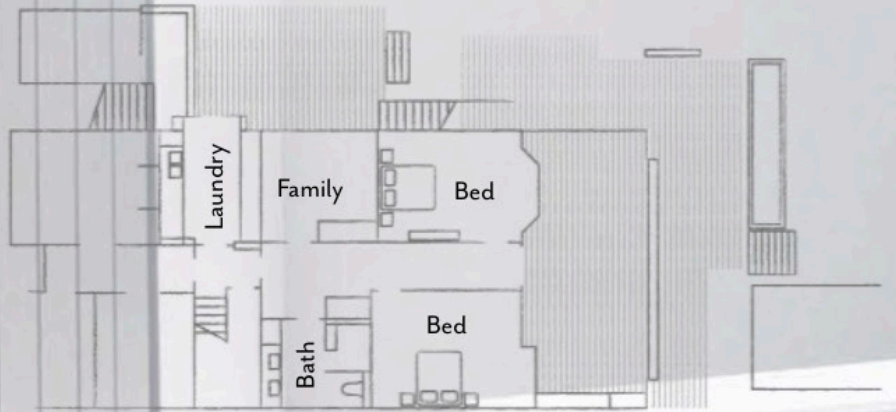


THE LAYOUT

Ground floor



Lower ground



LAUNDRY Moroccan wall tiles in Snow and terrazzo floor tiles in Dove, Surface Gallery. City Stik mixer tap in Brushed Nordic Brass, Brodware. Line wall lights, Snelling. V-groove cabinetry painted Dulux Silkwort. Bamboo bass handles, Hepburn Hardware. Smartstone benchtop in Nieve White. Joinery and custom rails by Janz Designs. Appliances, Bosch.



1

THE SOURCE

An interior scheme based on complementary colours will win you compliments all round.

2



3



4



5



6



7

8



9



10

1 Fusion **martini glasses**, \$49.95/set of 4, Freedom. 2 Line 01 **pendant light**, \$1080, Snelling. 3 **Plantation shutters**, POA, Wynstan. 4 Signature Collection 24cm **bread oven**, \$540, Le Creuset. 5 Issy Blossom **mirror with shaving cabinet**, \$3429, Reece. 6 Trudon 'Ottoman' **room spray**, \$299, Libertine Parfumerie. 7 Sync Flower **textured tile**, \$269/m², Beaumont Tiles. 8 Australian House & Garden waffle **bath towel**, \$45, Myer. 9 Atelier **salad bowl** in Raspberry, \$420, Dinosaur Designs. 10 Plaza Composition 9 **sofa package**, from \$7743, King. *For Where to Buy, see page 190.* **H&G**